



Supervisory  
Practices  
Program

## Supervising for Comprehensive Identification and Exploring for Relative Resources

1  
1/13/2009

---

---

---

---

---

---

---

---

### Kaylie

Remarked to a stranger at a spaghetti supper recently that she was no longer a foster kid, because now she lives with her grandparents.

2  
1/13/2009

---

---

---

---

---

---

---

---



Supervisory  
Practices  
Program

3  
1/13/2009

---

---

---

---

---

---

---

---

## Introductions

- \* Name
- \* Office
- \* Number at a meaningful family gathering

4  
1/13/2009

---

---

---

---

---

---

---

---

## Workshop Objectives:

- \* Connecting relative identification, exploration and utilization to relevant policy, law and practice guidelines
- \* Understanding supervisory role and responsibilities
- \* Supervisory performance self assessment and preparation for planning conversation with PA/APA

5  
1/13/2009

---

---

---

---

---

---

---

---

Supervisory Standards

Law

Child and Family Services Review

Policy

Practice Model

6  
1/13/2009

---

---

---

---

---

---

---

---

# Impact of Kinship Care on Behavioral Well-being for Children in Out-of-Home Care

David Rubin  
(June 2008)

7  
1/13/2009

---

---

---

---

---

---

---

---

## Number of Relative Placements August 2008

District	Baseline Number of Children in Relative Placements in Oct. 07	Goal for Number of relative placements (25% of Population)	Current Number of Relative Placements	Number of placements with relative since Oct 2007	Relative Placements as a Percent of Population	Number of placements needed to reach Goal
1	84	80	75	80	23.2%	14
2	86	82	85	100	28.3%	(3)
3	56	76	61	76	21.7%	15
4	36	33	46	41	37.1%	(13)
5A	63	63	51	83	23.0%	12
5S	29	37	35	49	24.5%	2
6	81	81	81	87	27.0%	(1)
7	28	35	41	39	31.8%	(7)
8	21	30	18	18	19.1%	12
Statewide	484	525	493	573	25.9%	32

8  
1/13/2009

---

---

---

---

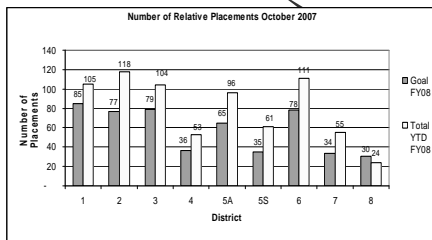
---

---

---

---

## # of Relative Placements October '07



August '08

9  
1/13/2009

---

---

---

---

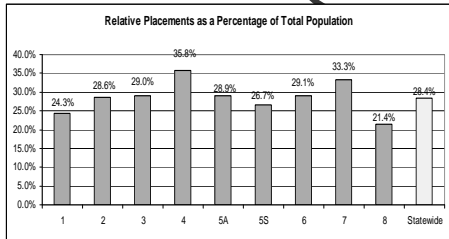
---

---

---

---

### Relative Placements as % of Total Population



August '08

10  
1/13/2009

---

---

---

---

---

---

---

---

---

---

### Total Children Currently Placed in a Relative Placement

Total Children Currently Placed in a Relative Placement												Updated Mon	
DISTRICT	O-07	N-07	D-07	J-08	F-08	M-08	A-08	M-08	J-08	J-08	A-08	S-08	Goal
1	92	93	91	85	80	82	81	77	75	76	74		85
2	89	88	96	95	94	93	92	85	85	82	78		77
3	53	58	56	48	54	56	53	58	61	69	83		76
4	35	36	39	40	37	42	45	48	46	42	49		36
5A	64	66	64	59	57	51	50	52	51	59	66		66
5S	30	35	34	27	35	35	33	33	35	36	36		35
6	88	83	88	91	89	82	87	87	81	82	84		78
7	26	23	25	32	34	35	39	33	41	39	42		34
8	19	17	19	21	18	19	21	16	16	22	21		30
STATE	496	509	512	498	498	495	501	489	493	507	533		519

August '08

11  
1/13/2009

---

---

---

---

---

---

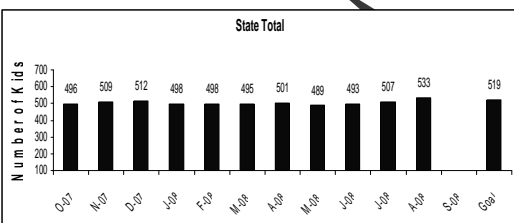
---

---

---

---

### State Total: Children Placed with Relatives



August '08

12  
1/13/2009

---

---

---

---

---

---

---

---

---

---

## Decisive Factors

Draft list of factors to assist in assessing the quality of the documentation of Relative Resources narratives

13  
1/13/2009

---

---

---

---

---

---

---

---

## Case Study

- \* Individually read the Relative Resource narrative, Page 2 - 5
- \* In groups decide which Decisive Factors are met, partially met and unmet.
- \* Decide what you need to see in the narrative to meet the Decisive Factor

14  
1/13/2009

---

---

---

---

---

---

---

---

## RESULTS

- \* Met, Partially Met or Unmet
- \* To meet the DF, the narrative needs to include\_\_\_\_\_.

15  
1/13/2009

---

---

---

---

---

---

---

---

**Decisive Factor # 1**

Names, addresses, phone numbers,  
household composition, DOB's

16  
1/13/2009

---

---

---

---

---

---

---

---

**Decisive Factor # 2**

Evidence that the worker took steps  
to identify and attempted to  
personally contact and interview  
each **maternal** and **paternal** family  
member in a way that invites their  
potential participation with the  
child. (And any exception to this is  
documented.)

17  
1/13/2009

---

---

---

---

---

---

---

---

**Decisive Factor # 3**

Relationships with this child - past  
and present and hopes for the  
future are explained

18  
1/13/2009

---

---

---

---

---

---

---

---

**Decisive Factor # 4**

There is evidence that prior Relative Resource entries have been reviewed and have been incorporated into the current relative exploration.

19  
1/13/2009

---

---

---

---

---

---

---

---

**Decisive Factor # 5**

Indication of what each **maternal** and **paternal** family member will offer toward supporting this child (if safe) in addition or instead of placement.

20  
1/13/2009

---

---

---

---

---

---

---

---

**Decisive Factor # 6**

Identification of what supports the child, the parents and the **maternal** and **paternal** family member will have available to them, should they become very involved with the care of this child.

21  
1/13/2009

---

---

---

---

---

---

---

---

**Decisive Factor # 7**

Indication of whether each **maternal** and **paternal** family member would attend Family Team Meetings, if invited.

22  
1/13/2009

---

---

---

---

---

---

---

---

**Decisive Factor # 8**

A thorough exploration is done with the child, considering his/her experiences, thoughts and feelings about each maternal and paternal family member that has been identified. Reference to the date of the face-to-face contact with the child is noted.

23  
1/13/2009

---

---

---

---

---

---

---

---

**Decisive Factor # 9**

There is a specific explanation for the reasons why any relative has been excluded from being considered as a resource. Refer to the location of supporting information.

24  
1/13/2009

---

---

---

---

---

---

---

---

## Decisive Factor # 10

The entry identifies the 'Next Steps' for future exploration

25  
1/13/2009

---

---

---

---

---

---

---

---

## Adding to the Decisive Factors List

Now that you've experienced the draft list:

- \* What would you add?
- \* What would you change?

26  
1/13/2009

---

---

---

---

---

---

---

---

## Applying the Decisive Factors to Unit Work

- \* Individually read your unit's Relative Resources narratives and rate them using the Decisive Factors
- \* Record your assessment of each narrative on the Decisive Factors sheet.
- \* Get through as many narratives as you can in 10 minutes.

27  
1/13/2009

---

---

---

---

---

---

---

---

**Look for Themes:**

**Strengths**

**Challenges**

28  
1/13/2009

---

---

---

---

---

---

---

---

**Reflection:**

How will you use the information you have learned today with your unit or with individual workers?

29  
1/13/2009

---

---

---

---

---

---

---

---

**Policy Considerations**

**&**

**Practice Expectations**

30  
1/13/2009

---

---

---

---

---

---

---

---



**Current Supervisory Practice**

**Self-Assessment**

34  
1/13/2009

---

---

---

---

---

---

---

---

**Identification of:**

**Values & Beliefs**

35  
1/13/2009

---

---

---

---

---

---

---

---

**QUIZ**

\*6 QUESTIONS

\*Use all of your resources available to you from your pre-work and what you learned today.

36  
1/13/2009

---

---

---

---

---

---

---

---

**Back in the Office:**

What can you commit to start doing right away?

37  
1/13/2009

---

---

---

---

---

---

---

---

**Workshop Evaluation**

- \* Survey Monkey
- \* Watch for instructions on email
- \* Please complete and return
- \* CEU's will be mailed

38  
1/13/2009

---

---

---

---

---

---

---

---

**Kaylie**

Remarked to a stranger at a spaghetti supper recently that she was no longer a foster kid, because now she lives with her grandparents.

39  
1/13/2009

---

---

---

---

---

---

---

---



---

---

---

---

---

---

---